



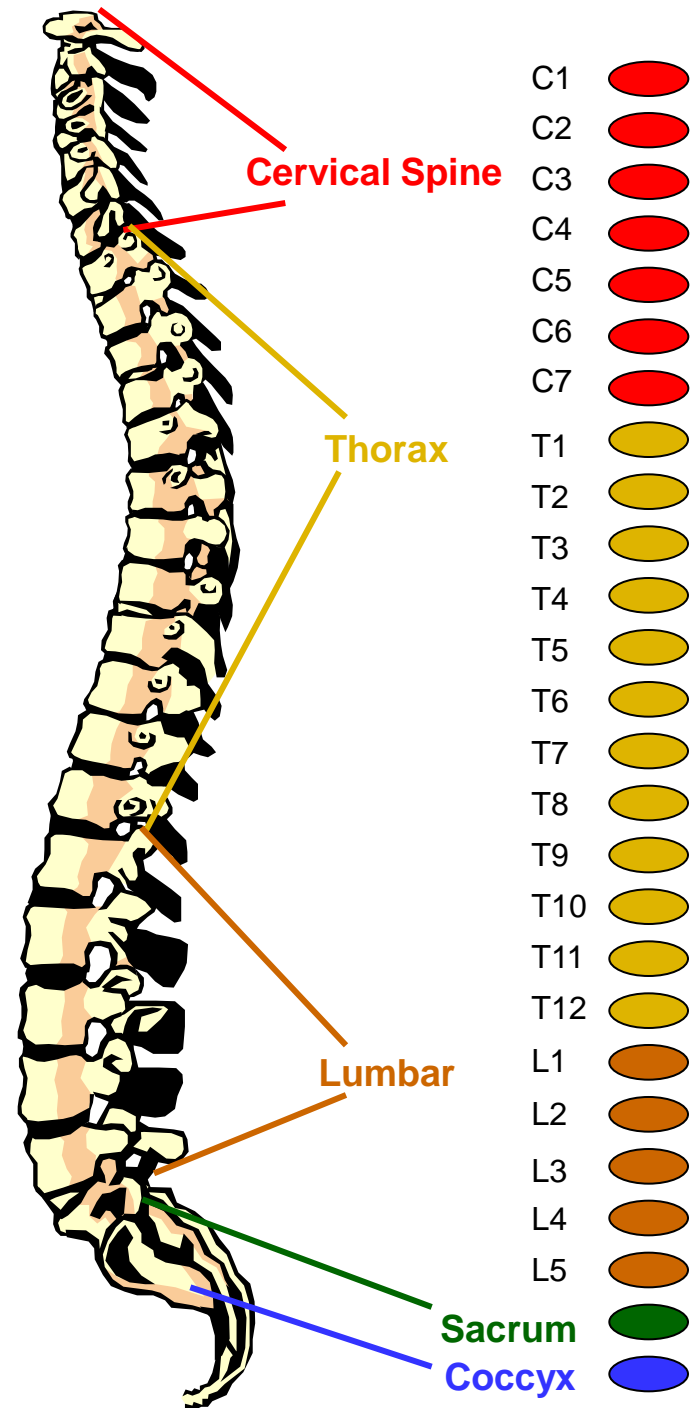
# Virtual Tour of the Spine

## How can one tiny vertebra effect your total health?

When a spinal vertebra shifts out of alignment, it may put damaging pressure on the spinal nerves causing interruption to the vital nerve flow within your body. This condition is referred to as

### VERTEBRAL SUBLUXATION.

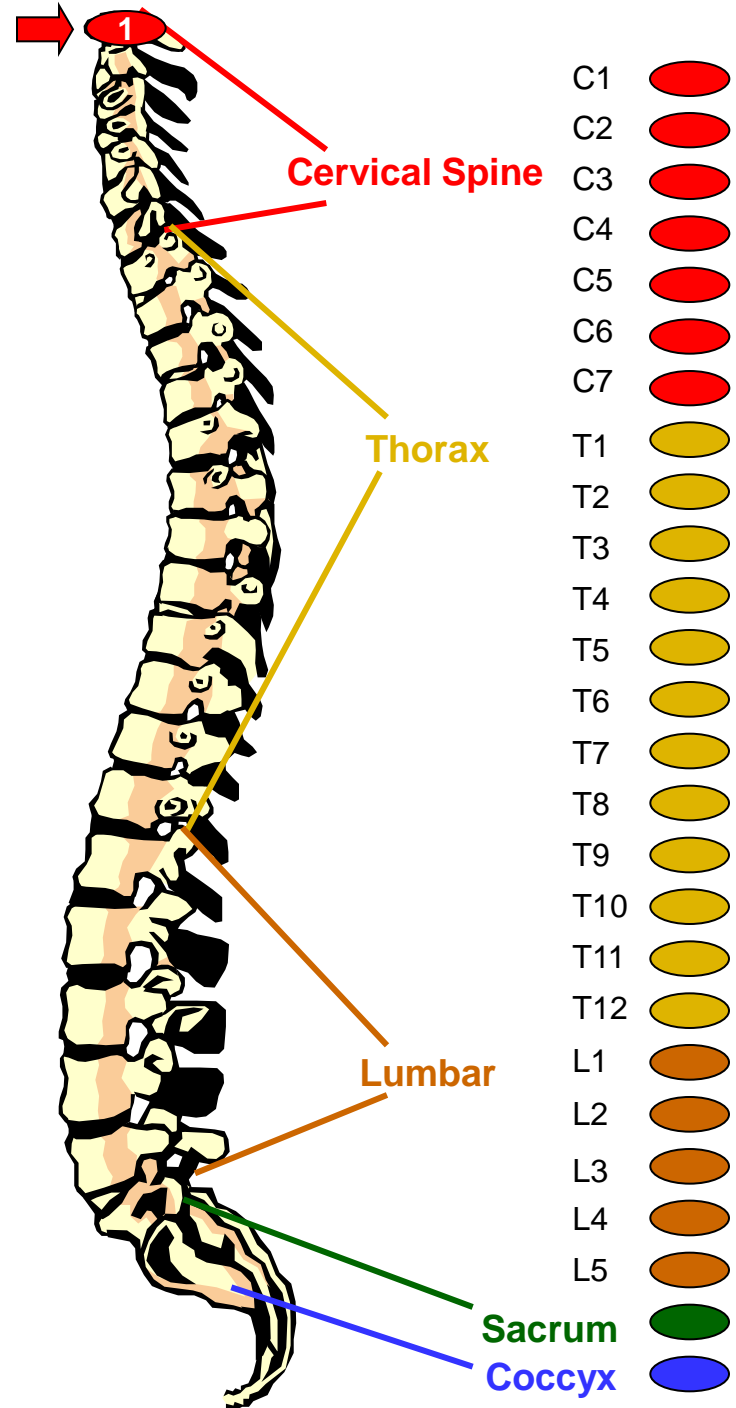
To find out more about how each little bone of your spine contributes to your total health click on the individual circles corresponding to each vertebra on the right.





# Virtual Tour of the Spine

## C1 or Atlas Vertebra



### Areas controlled by Nerves:

- Blood supply to the head
- Pituitary gland
- Scalp
- Bones in the face
- Brain
- Inner & Middle Ear
- Sympathetic Nervous System

### Possible Effects of Malfunction (due to subluxation)

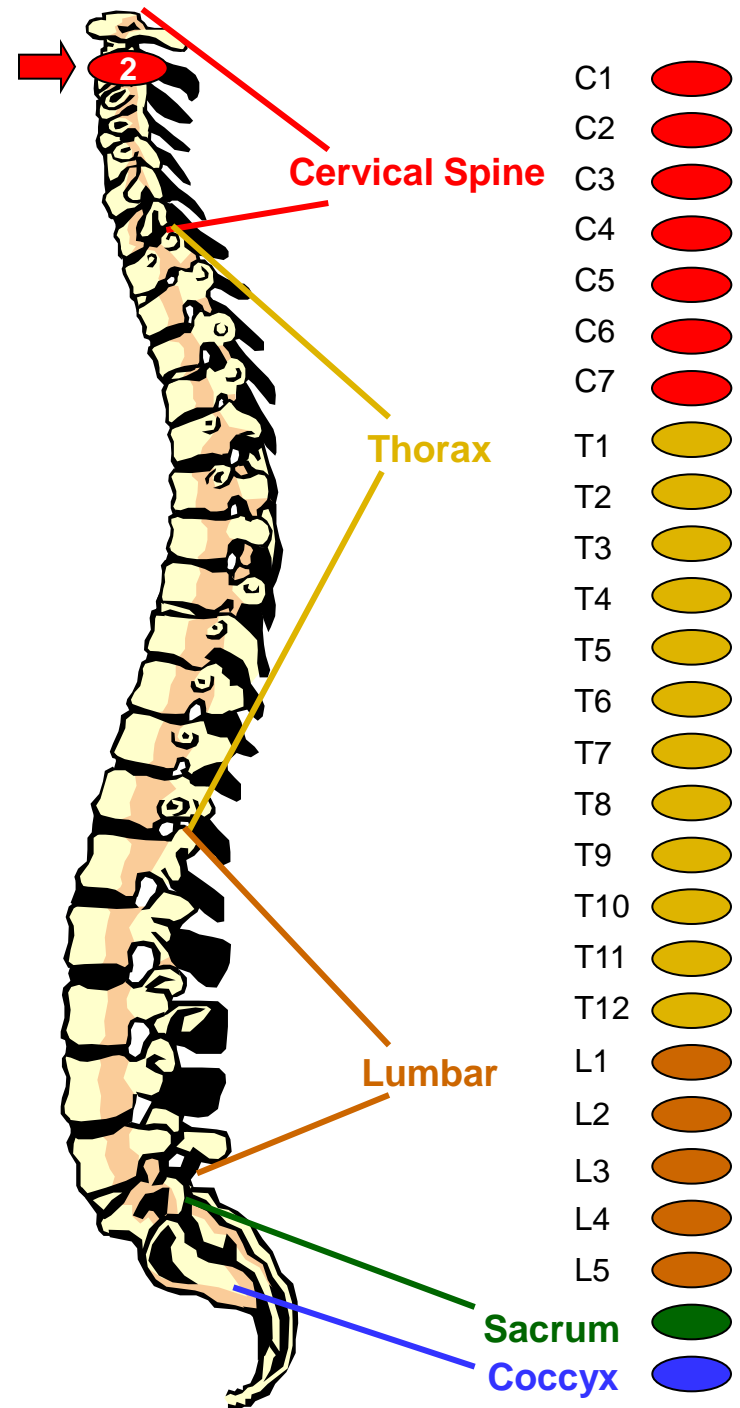
- Headaches
- Nervousness
- Insomnia
- Head colds
- High blood pressure
- Migraine headaches
- Nervous breakdowns
- Amnesia
- Chronic tiredness
- Dizziness





# Virtual Tour of the Spine

## C2 or Axis Vertebra



### Areas controlled by Nerves:

- Eyes
- Optic nerves
- Auditory nerves
- Sinus
- Mastoid bones
- Tongue
- Forehead

### Possible Effects of Malfunction (due to subluxation)

- Sinus trouble
- Allergies
- Cross eyes
- Deafness
- Eye trouble
- Earaches
- Fainting spells
- Vision difficulties





# Virtual Tour of the Spine

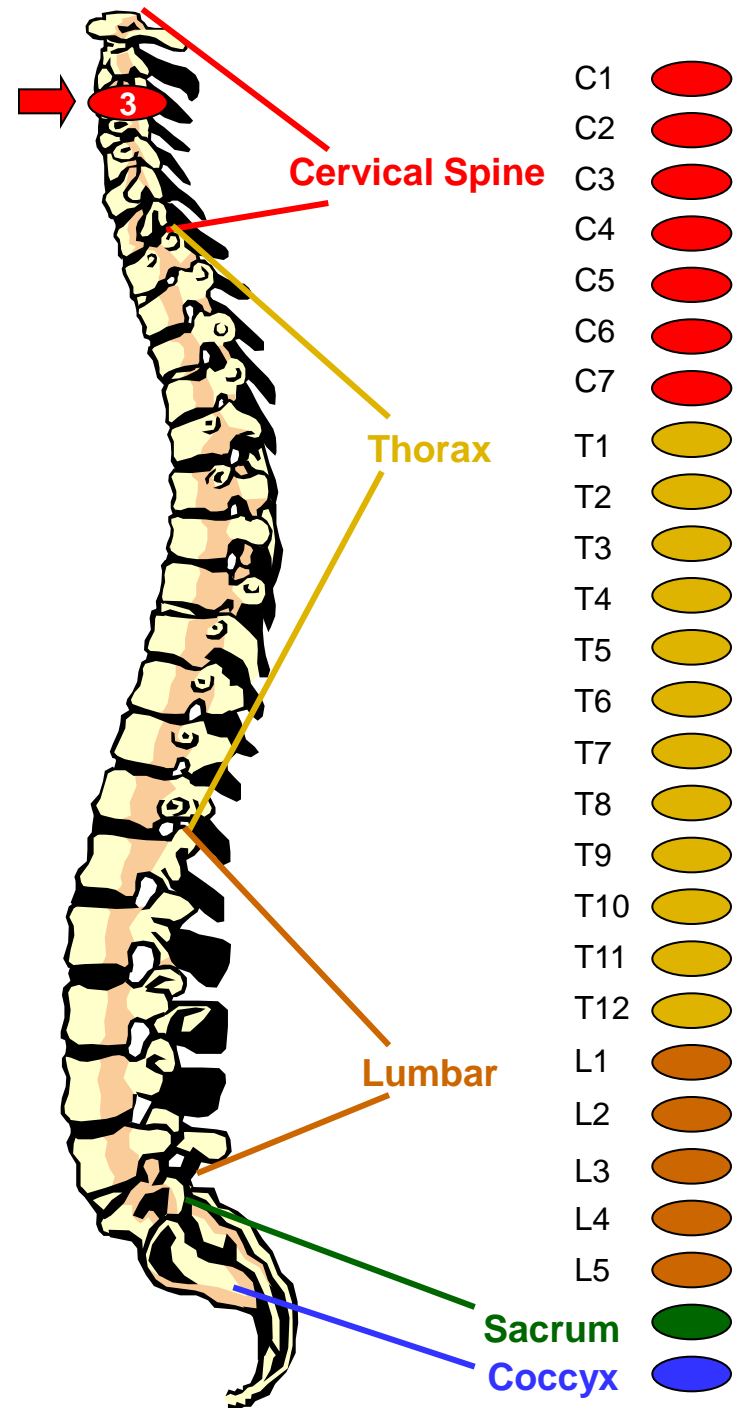
## 3rd Cervical Vertebra

### Areas controlled by Nerves:

- Cheeks
- Outer ear
- Face Bones
- Teeth
- Trifacial nerve

### Possible Effects of Malfunction (due to subluxation)

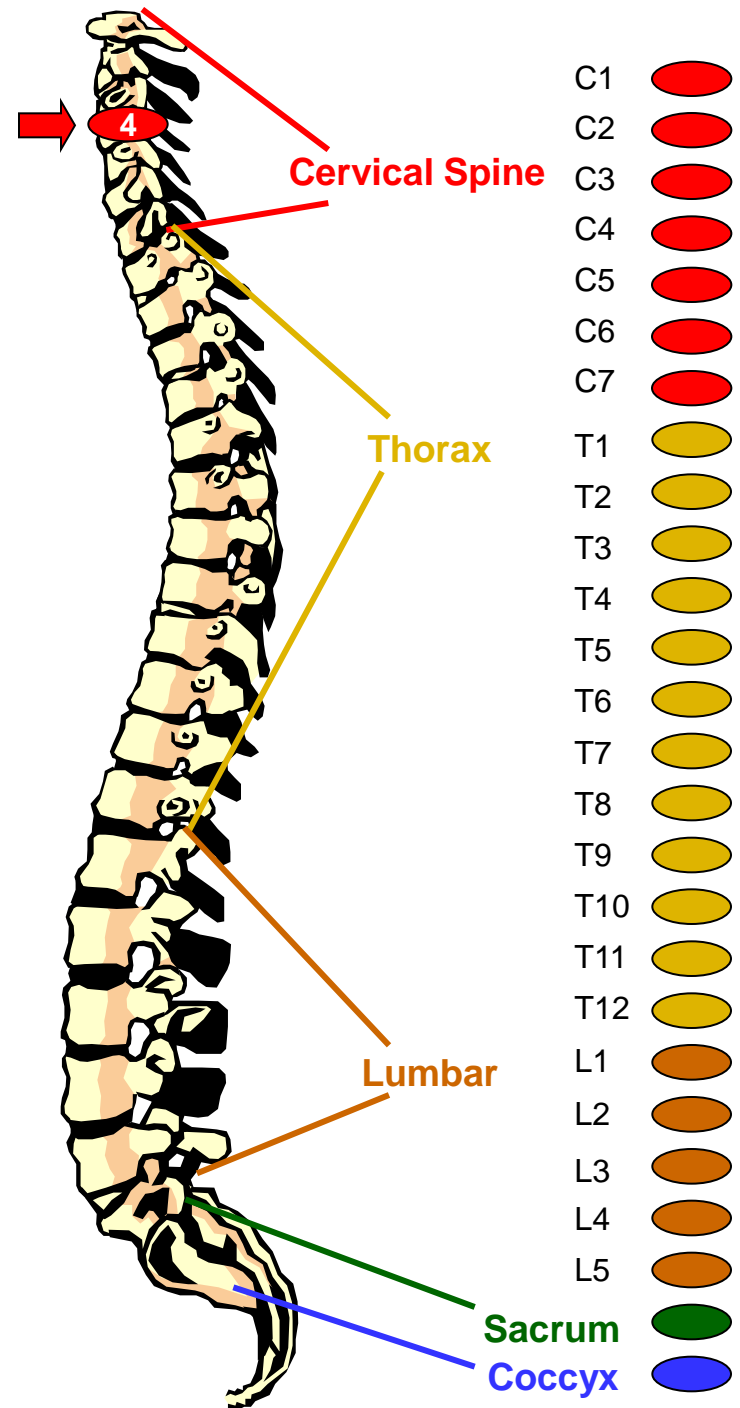
- Neuralgia
- Neuritis
- Acne or pimples
- Eczema





# Virtual Tour of the Spine

## 4th Cervical Vertebra



### Areas controlled by Nerves:

- Nose
- Lips
- Mouth
- Eustachian Tube

### Possible Effects of Malfunction (due to subluxation)

- Hay fever
- Catarrh
- Hearing loss
- Adenoids





# Virtual Tour of the Spine

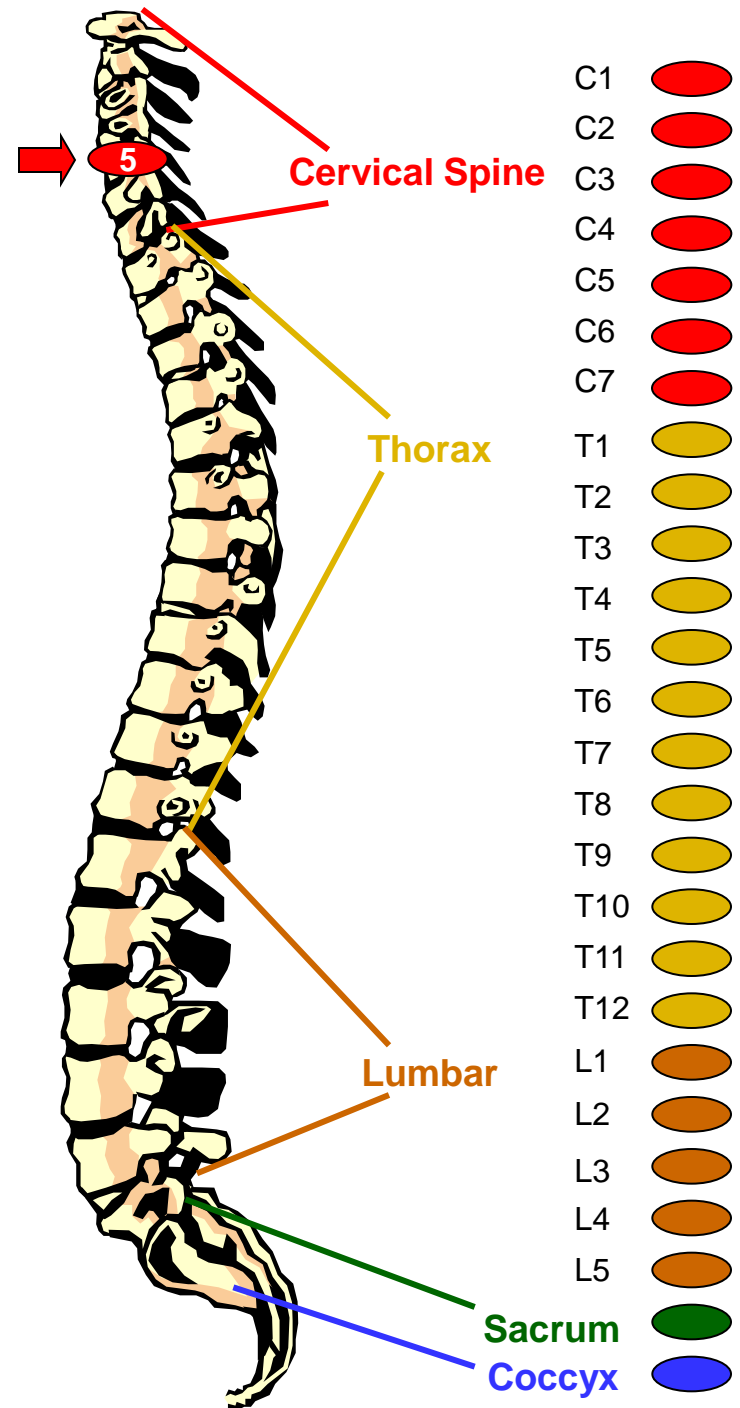
## 5th Cervical Vertebra

### Areas controlled by Nerves:

- Vocal cords
- Neck glands
- Pharynx

### Possible Effects of Malfunction (due to subluxation)

- Laryngitis
- Hoarseness
- Sore throats
- Quinisy





# Virtual Tour of the Spine

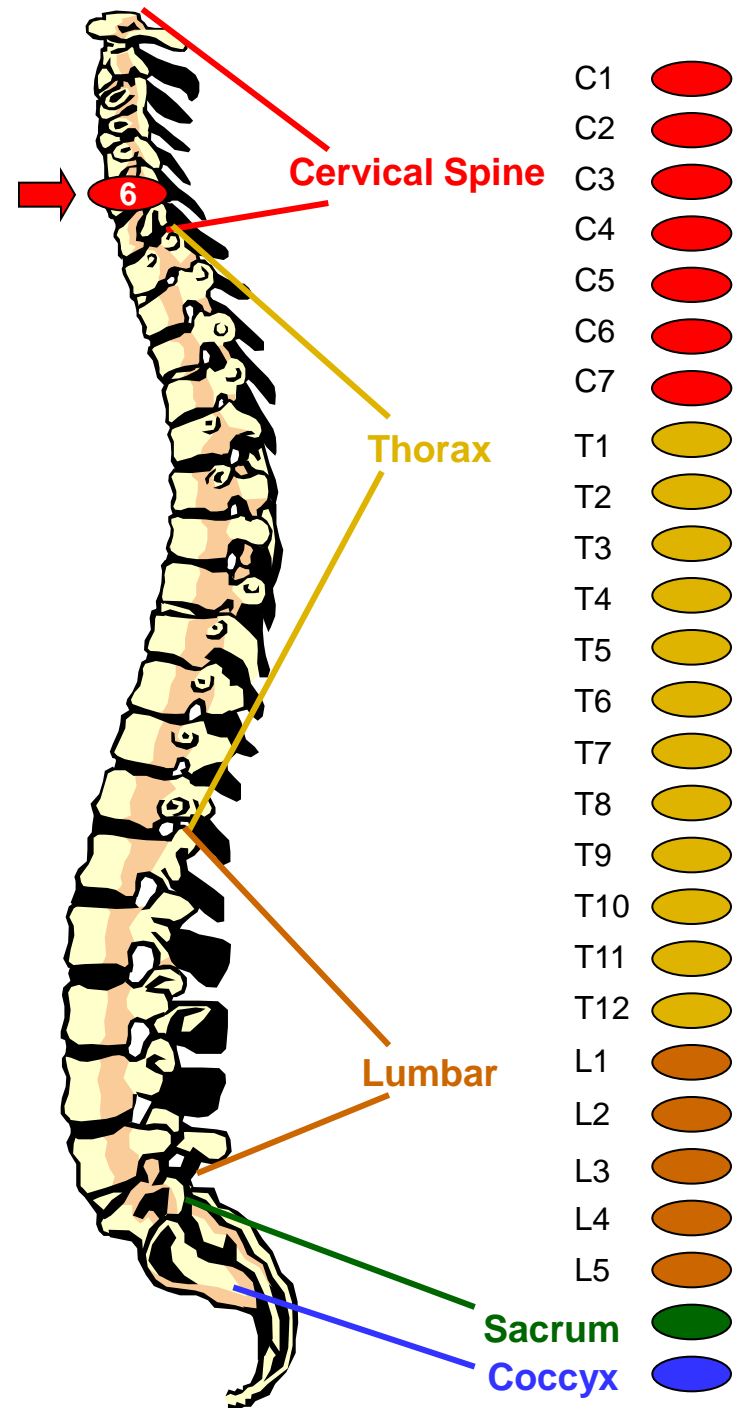
## 6th Cervical Vertebra

### Areas controlled by Nerves:

- Neck muscles
- Shoulders
- Tonsils

### Possible Effects of Malfunction (due to subluxation)

- Stiff neck
- Pain in upper arm
- Tonsillitis
- Whooping cough
- Croup





# Virtual Tour of the Spine

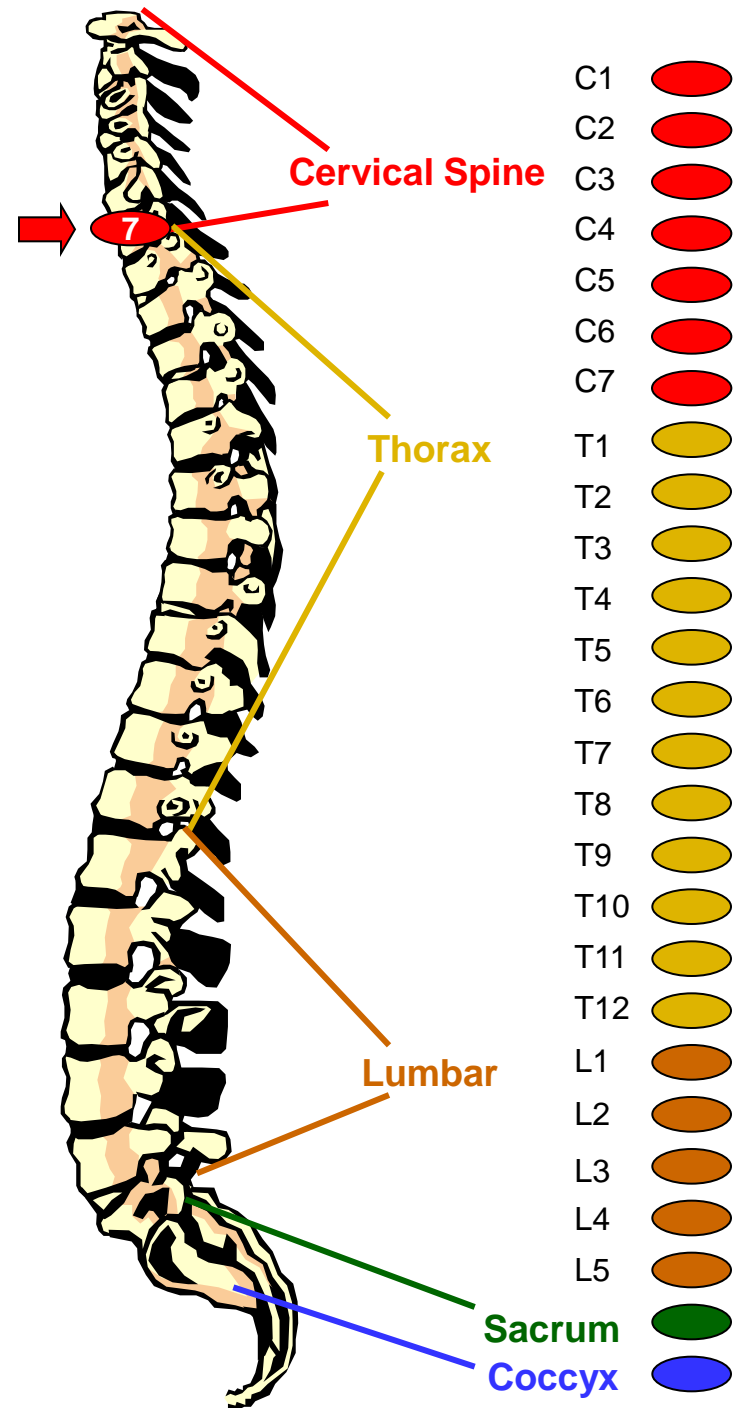
## 7th Cervical Vertebra

### Areas controlled by Nerves:

- Thyroid gland
- Bursae in the shoulders
- Elbows

### Possible Effects of Malfunction (due to subluxation)

- Bursitis
- Colds
- Thyroid conditions







# Virtual Tour of the Spine

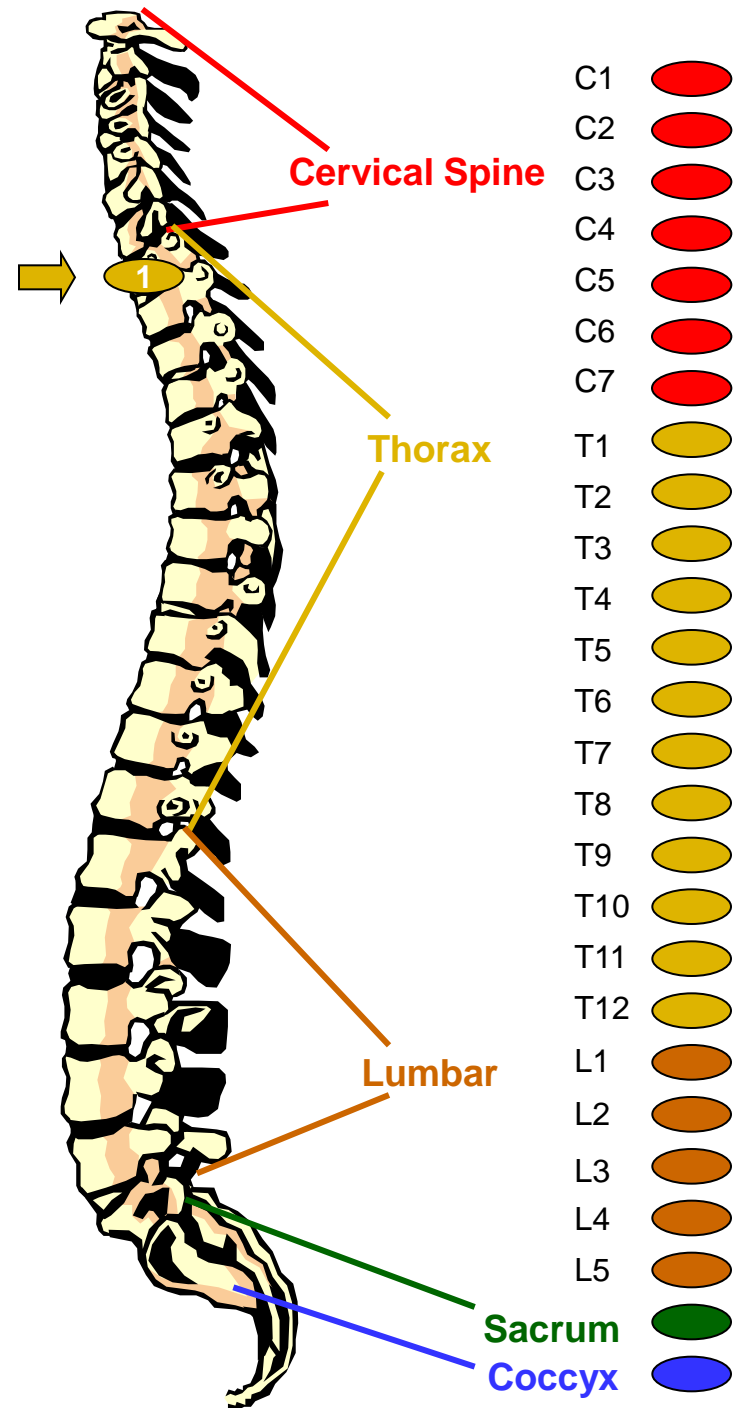
## 1st Thoracic Vertebra

### Areas controlled by Nerves:

- Arms from the elbows down including hands
- Wrists and fingers
- Esophagus and trachea

### Possible Effects of Malfunction (due to subluxation)

- Asthma
- Cough
- Difficulty breathing
- Shortness of breath
- Pain in lower arm
- Pain in hands





# Virtual Tour of the Spine

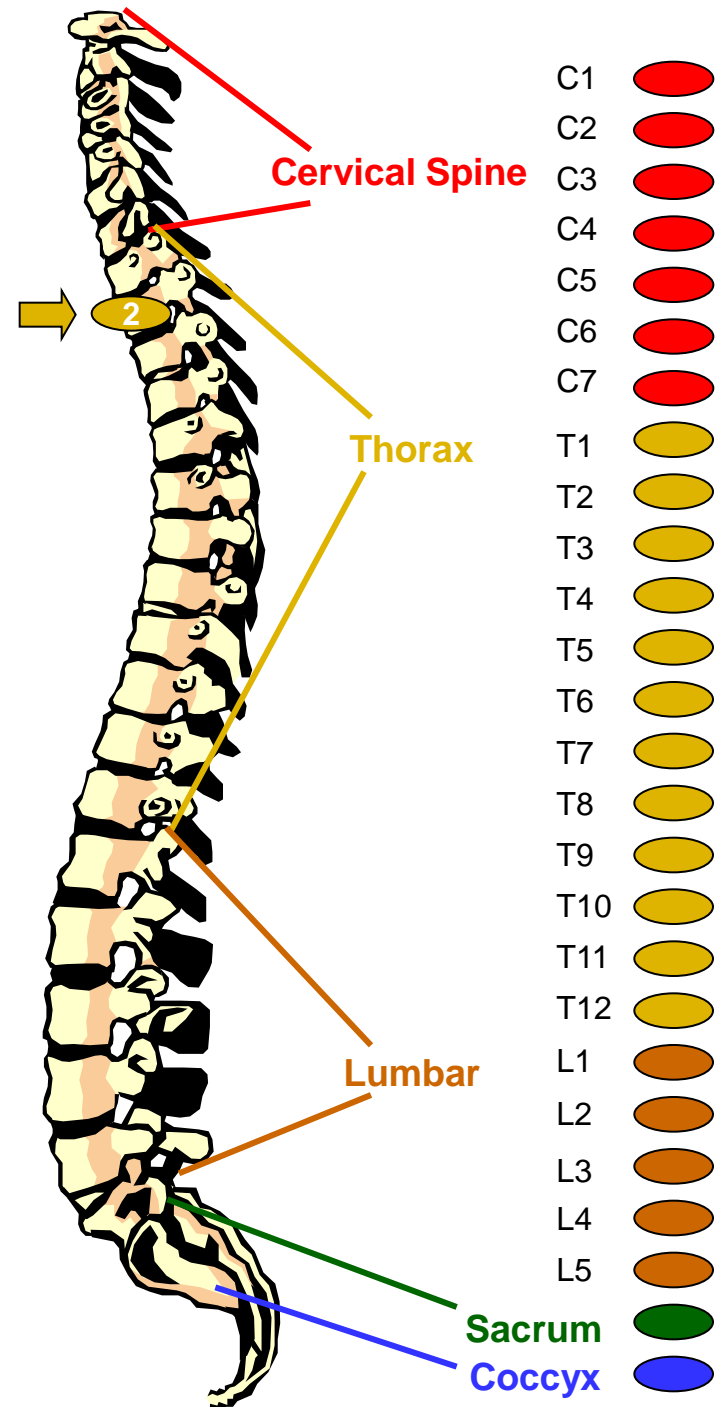
## 2nd Thoracic Vertebra

### Areas controlled by Nerves:

- Heart
- Heart valves
- Pericardium
- Coronary arteries

### Possible Effects of Malfunction (due to subluxation)

- Functional heart conditions
- Chest conditions





# Virtual Tour of the Spine

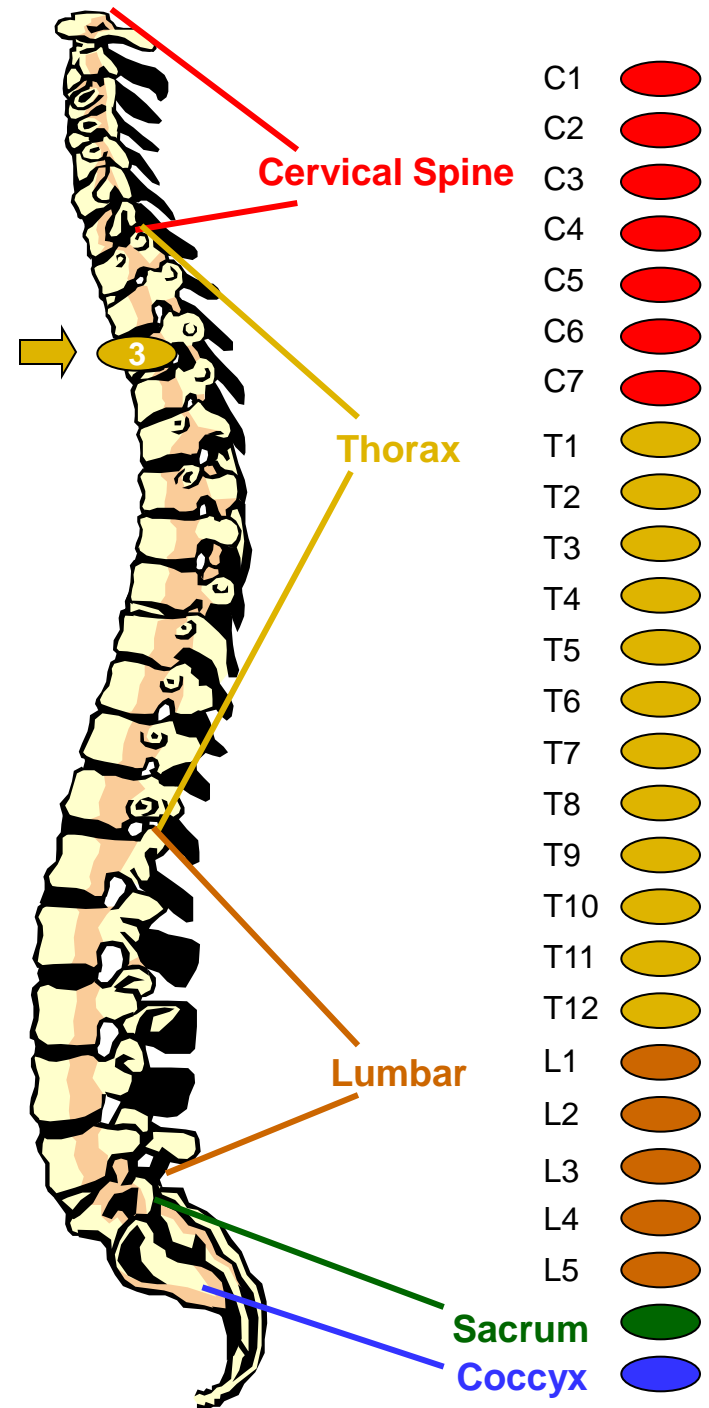
## 3rd Thoracic Vertebra

### Areas controlled by Nerves:

- Lungs
- Bronchial tubes
- Pleura
- Chest
- Breast

### Possible Effects of Malfunction (due to subluxation)

- Bronchitis
- Pleurisy
- Pneumonia
- Congestion
- Influenza





# Virtual Tour of the Spine

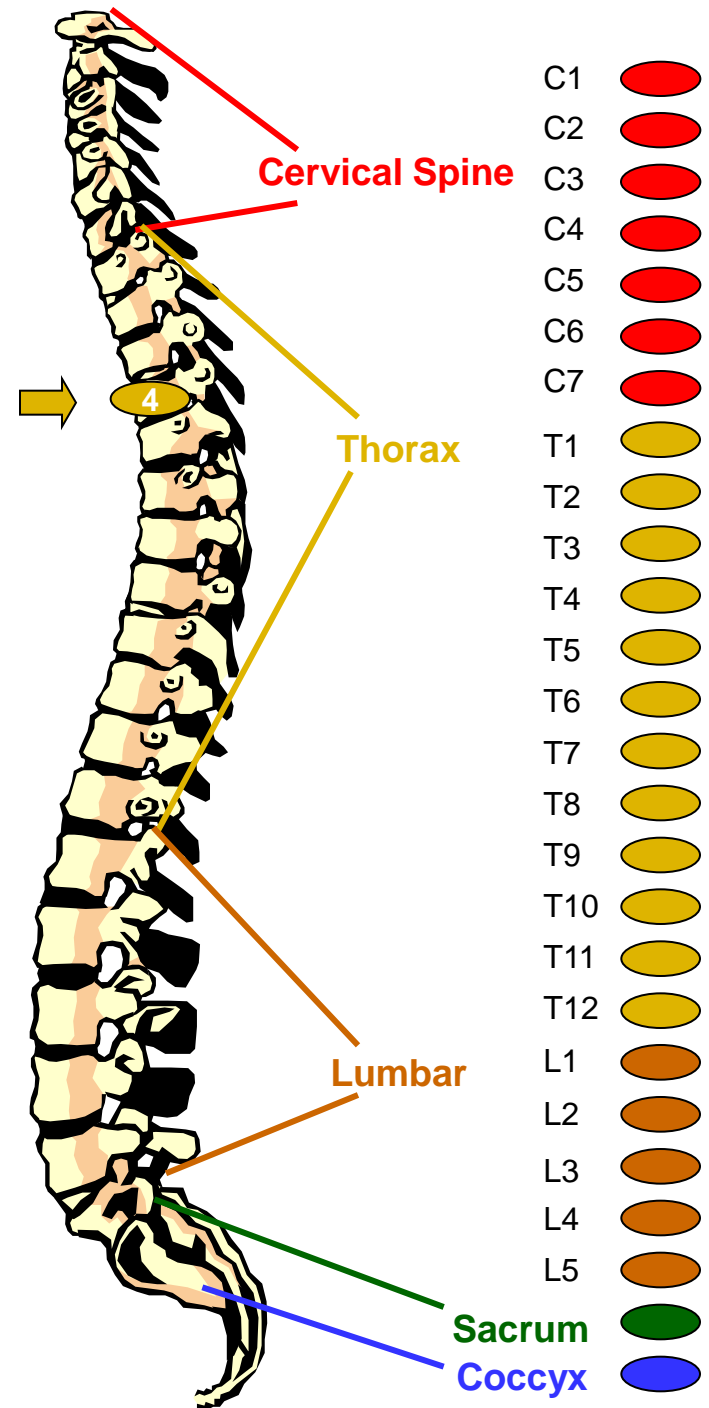
## 4th Thoracic Vertebra

### Areas controlled by Nerves:

- Gall bladder
- Common duct

### Possible Effects of Malfunction (due to subluxation)

- Gall bladder conditions
- Jaundice
- Shingles





# Virtual Tour of the Spine

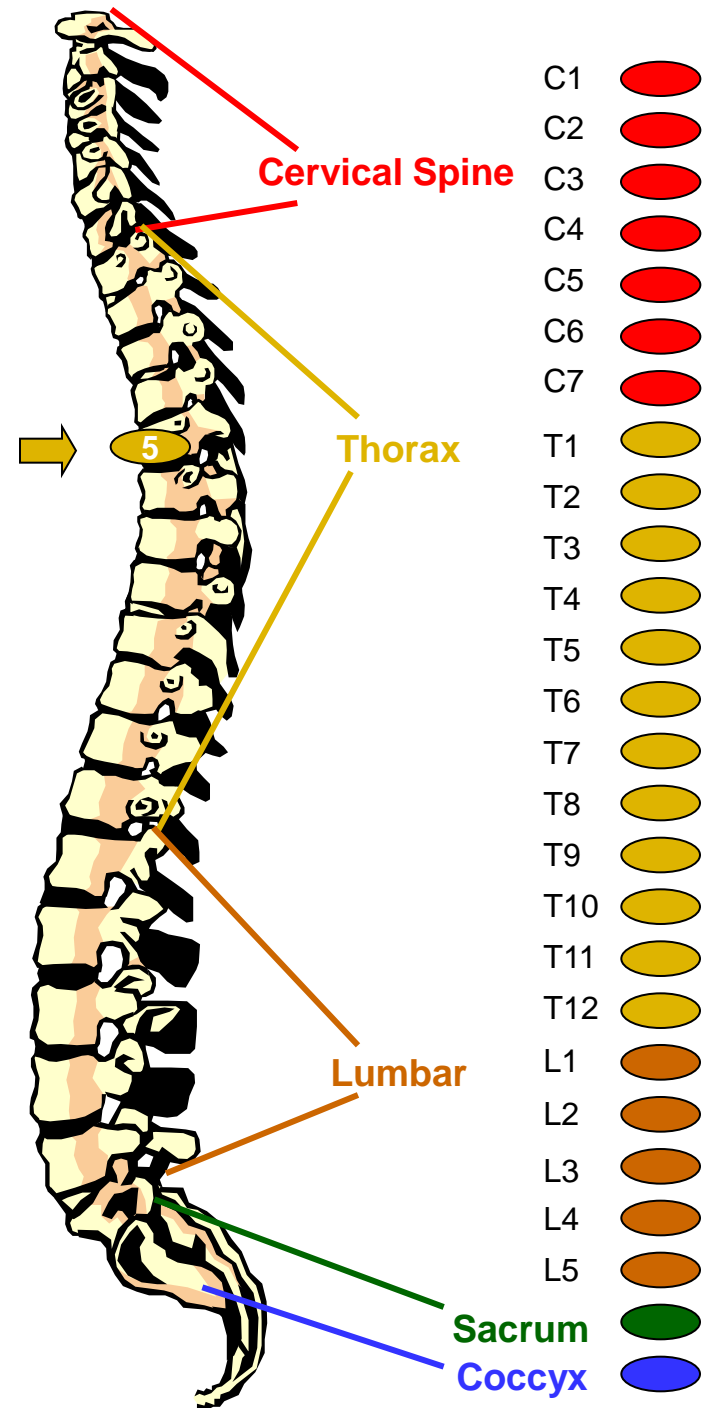
## 5th Thoracic Vertebra

### Areas controlled by Nerves:

- Liver
- Solar plexus
- Blood

### Possible Effects of Malfunction (due to subluxation)

- Liver conditions
- Fevers
- Low blood pressure
- Anemia
- Poor circulation
- Arthritis





# Virtual Tour of the Spine

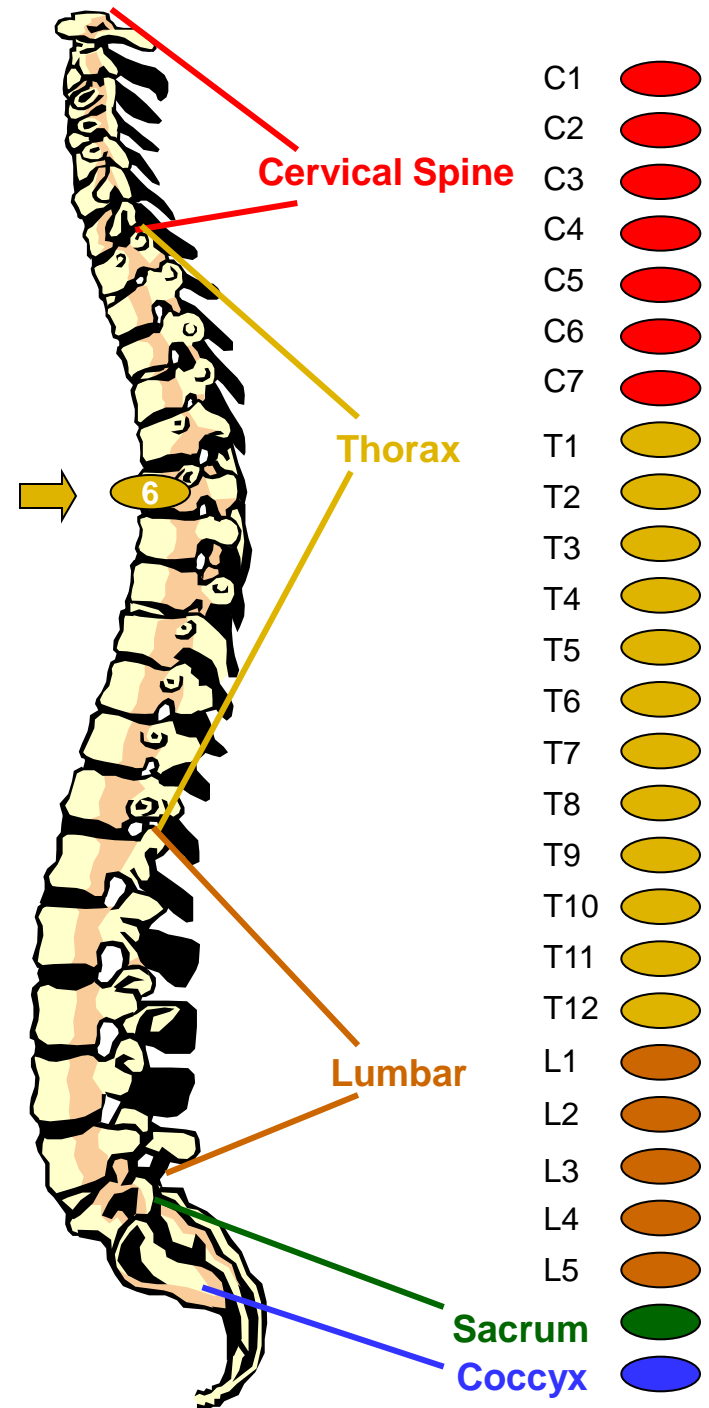
## 6th Thoracic Vertebra

### Areas controlled by Nerves:

- Stomach

### Possible Effects of Malfunction (due to subluxation)

- Stomach troubles
- Nervous stomach
- Indigestion
- Heartburn
- Dyspepsia





# Virtual Tour of the Spine

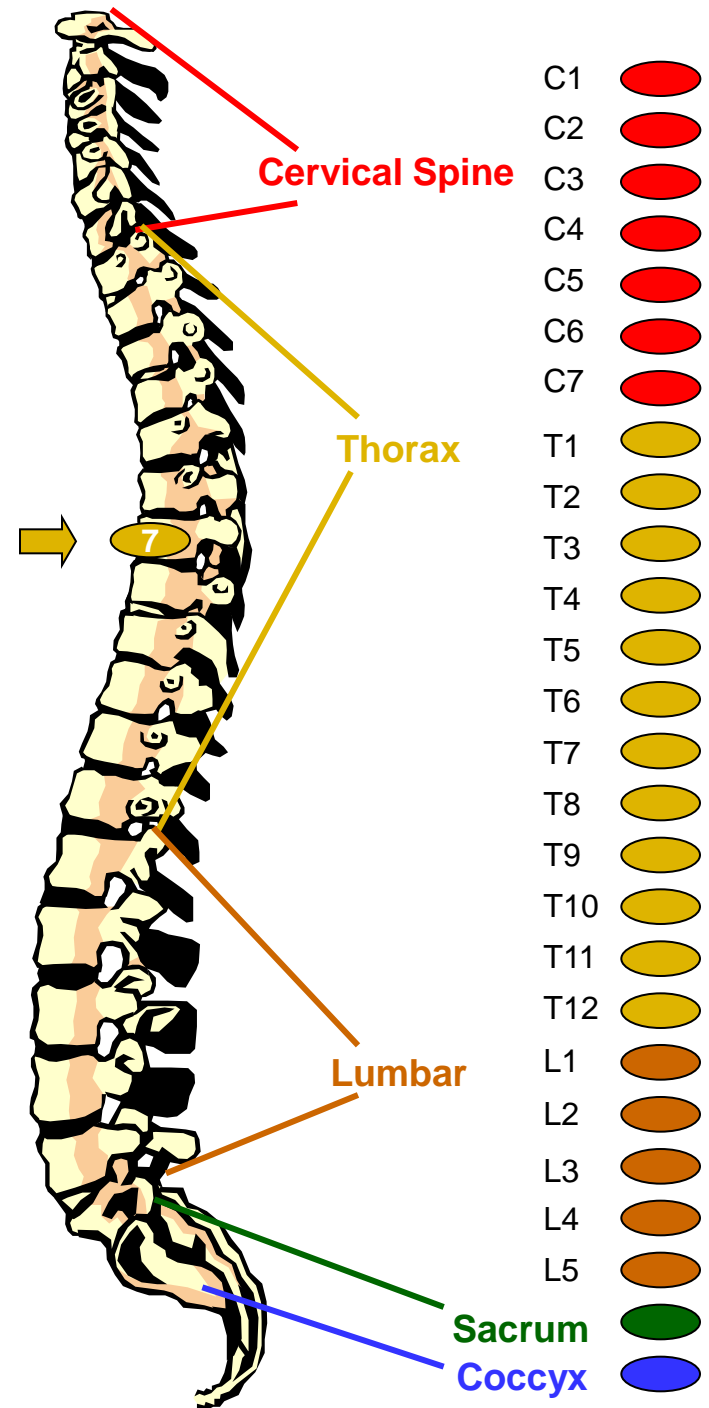
## 7th Thoracic Vertebra

### Areas controlled by Nerves:

- Pancreas
- Duodenum

### Possible Effects of Malfunction (due to subluxation)

- Ulcers
- Gastritis





# Virtual Tour of the Spine

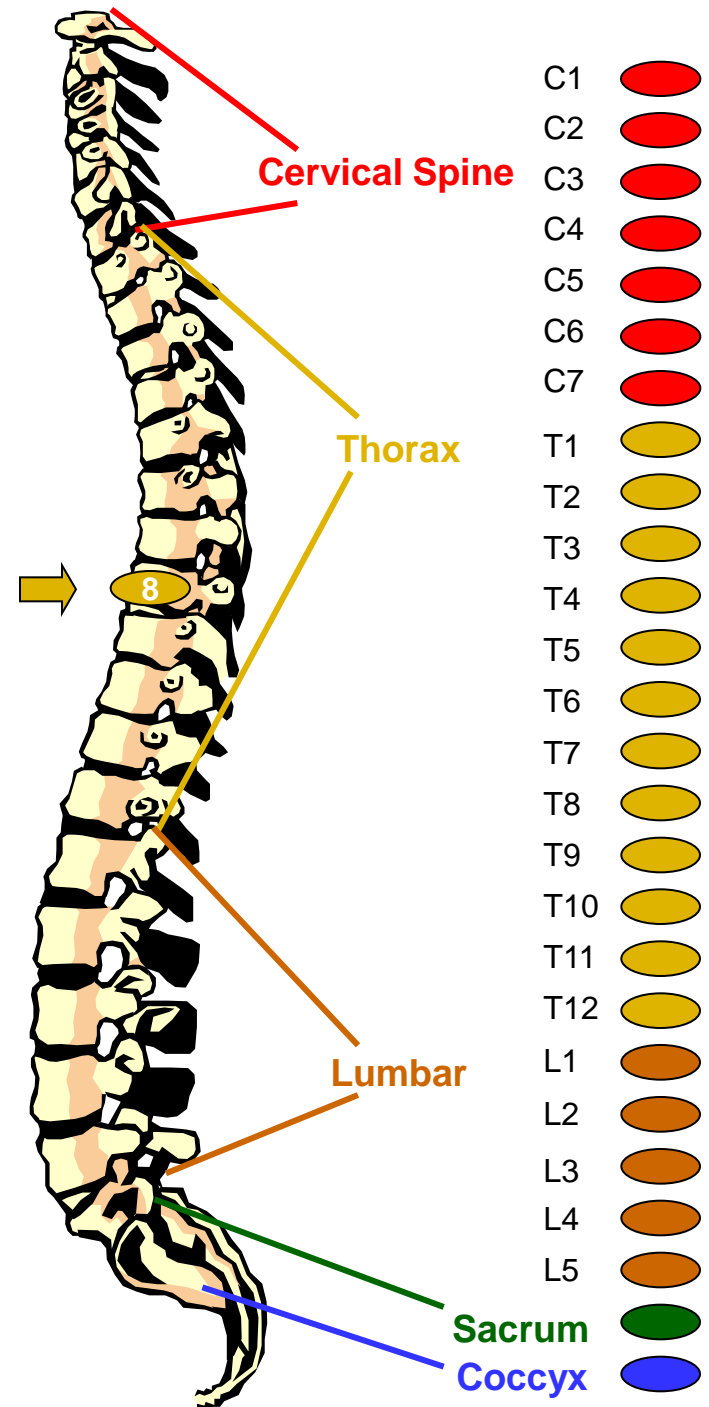
## 8th Thoracic Vertebra

### Areas controlled by Nerves:

- Spleen

### Possible Effects of Malfunction (due to subluxation)

- Low resistance to colds and disease







# Virtual Tour of the Spine

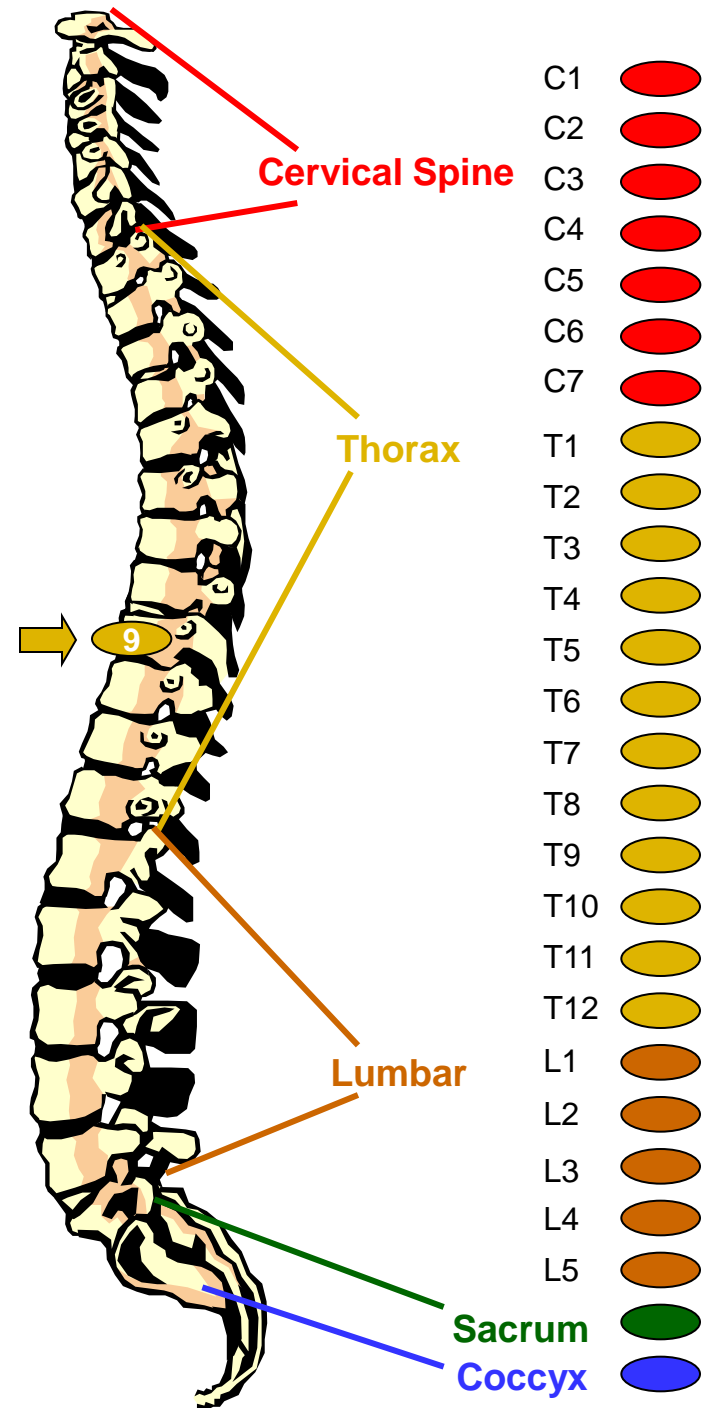
## 9th Thoracic Vertebra

### Areas controlled by Nerves:

- Adrenal glands
- Supra-renal glands

### Possible Effects of Malfunction (due to subluxation)

- Allergies
- Hives





# Virtual Tour of the Spine

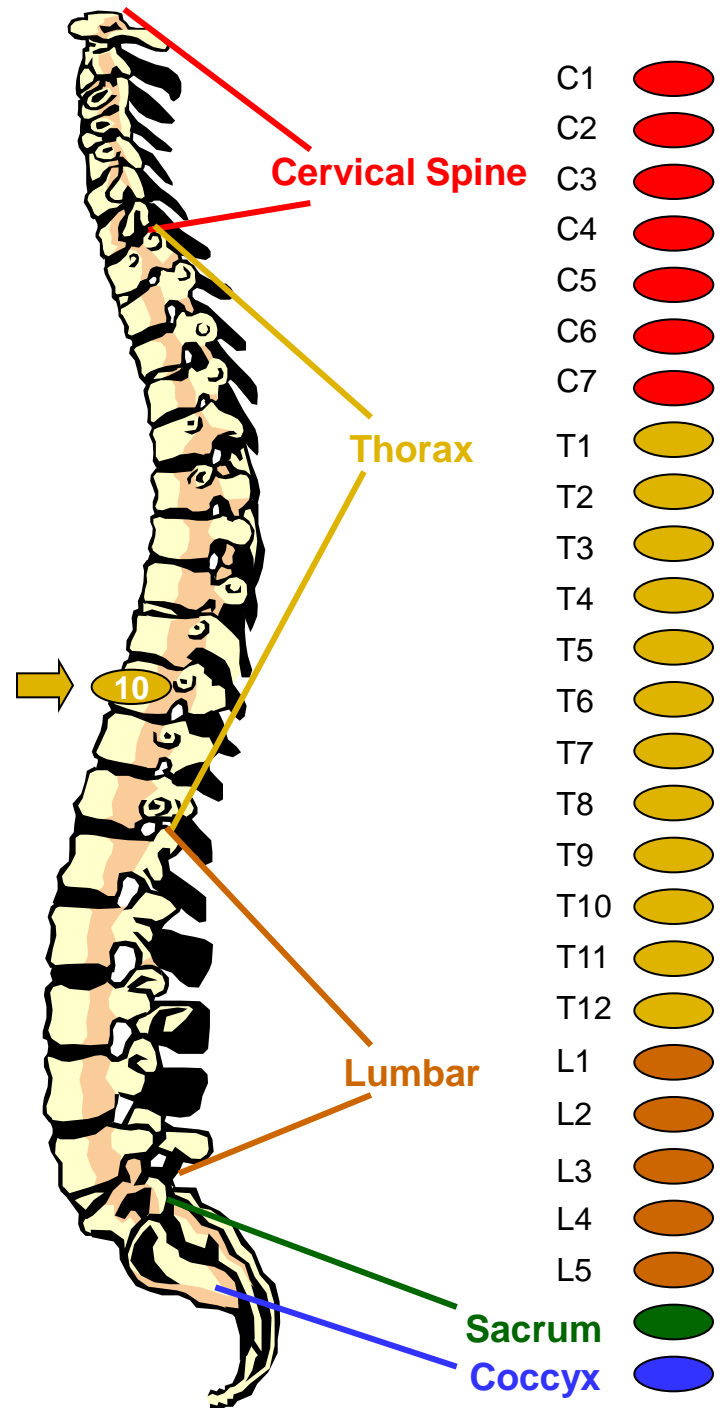
## 10th Thoracic Vertebra

### Areas controlled by Nerves:

- Kidneys

### Possible Effects of Malfunction (due to subluxation)

- Kidney troubles
- Hardening of the arteries
- Chronic tiredness
- Nephritis
- Pyelitis





# Virtual Tour of the Spine

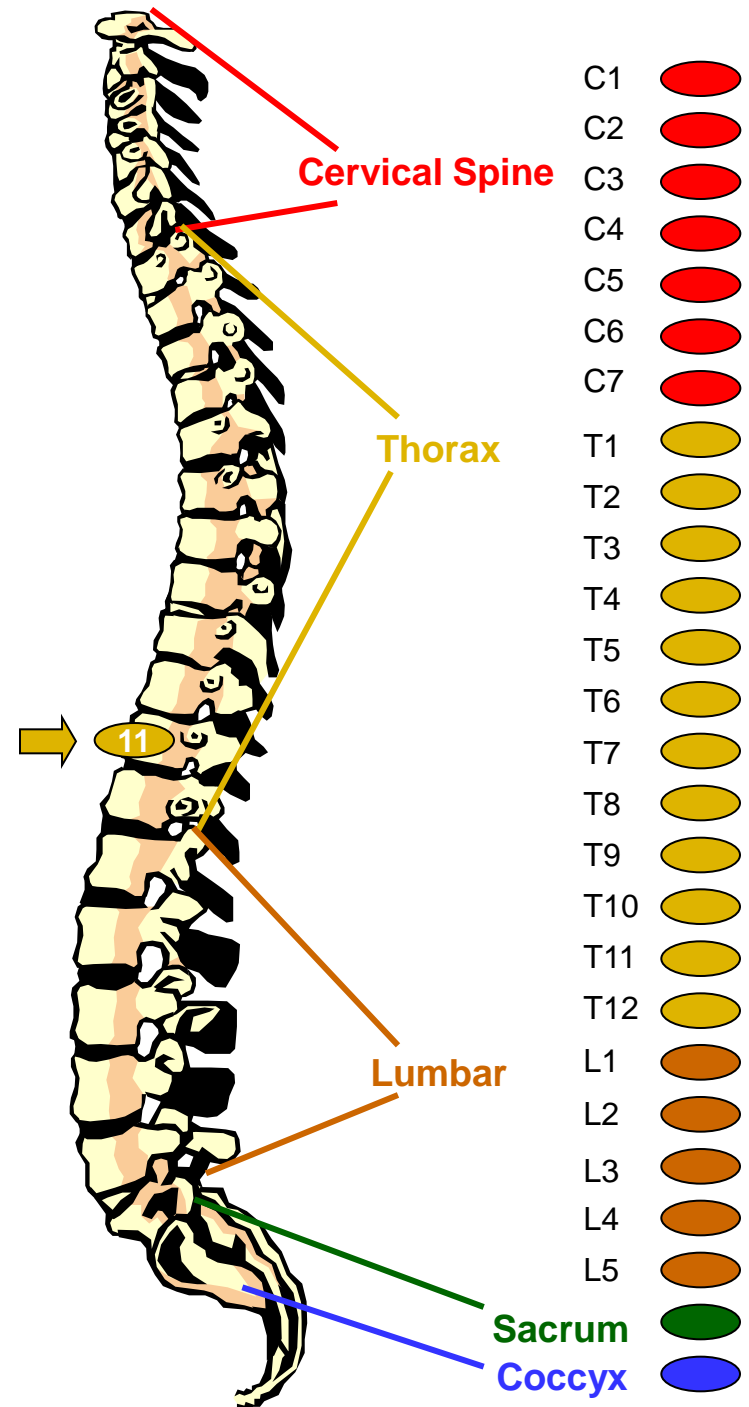
## 11th Thoracic Vertebra

### Areas controlled by Nerves:

- Kidneys
- Ureters

### Possible Effects of Malfunction (due to subluxation)

- Acne
- Pimples
- Eczema
- Boils





# Virtual Tour of the Spine

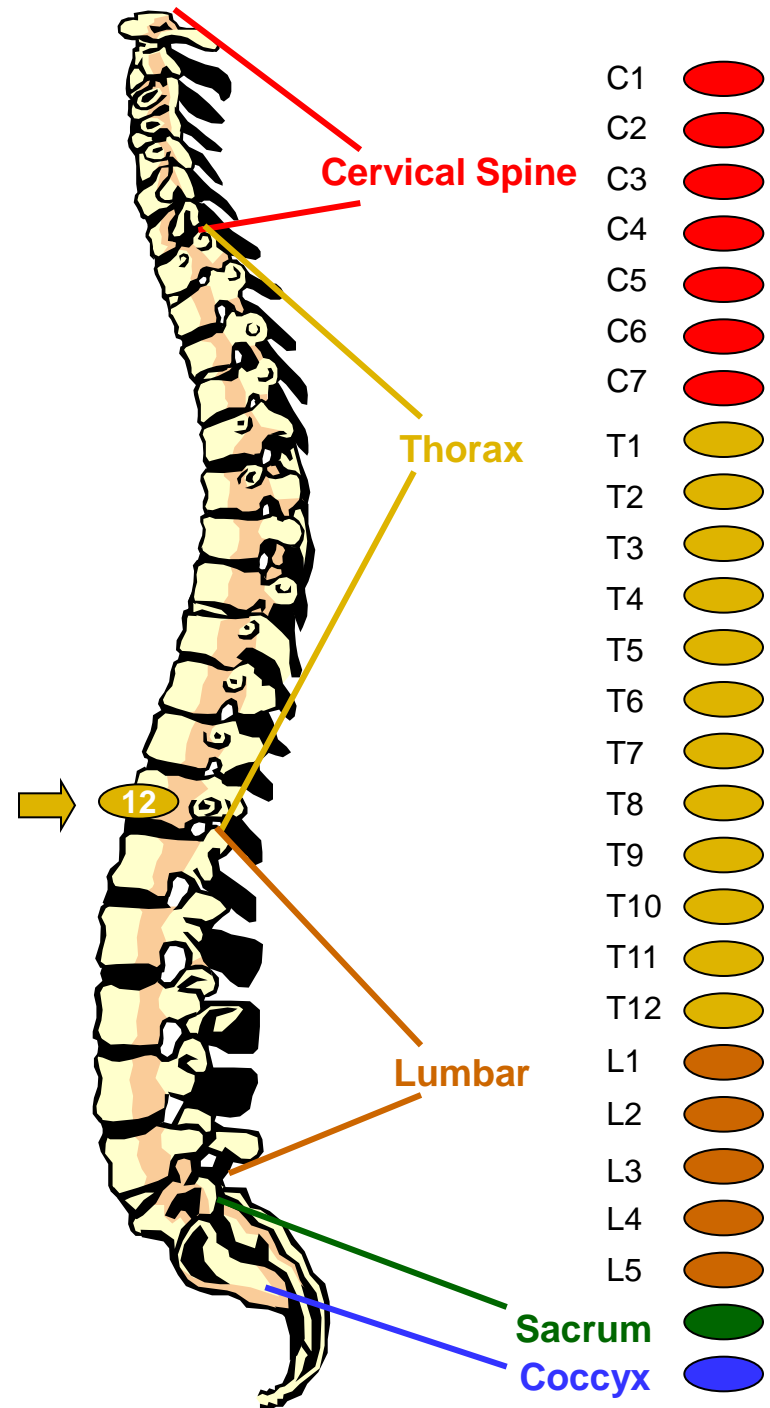
## 12th Thoracic Vertebra

### Areas controlled by Nerves:

- Small intestines
- Lymph
- Circulation

### Possible Effects of Malfunction (due to subluxation)

- Rheumatism
- Gas pains
- Sterility





# Virtual Tour of the Spine

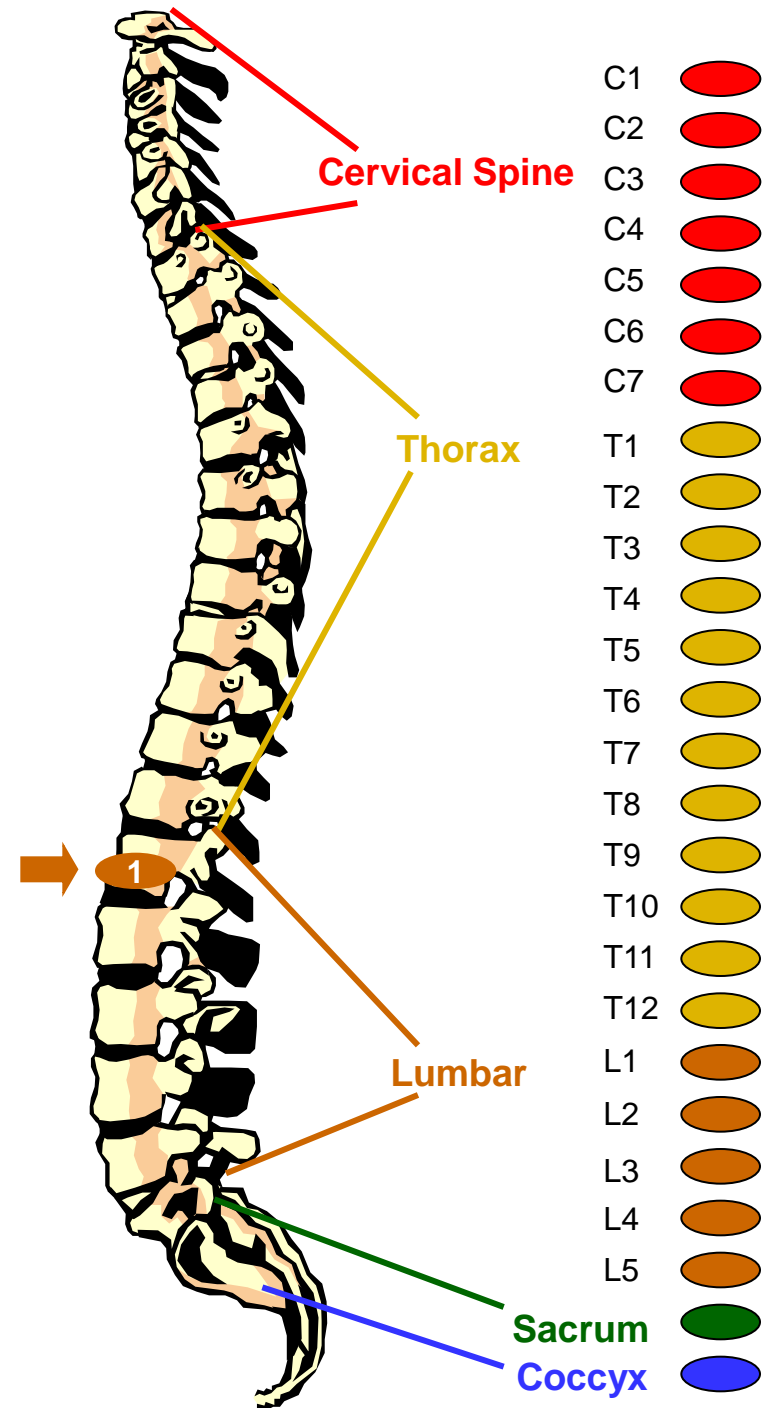
## 1st Lumbar Vertebra

### Areas controlled by Nerves:

- Large intestines
- Inguinal rings

### Possible Effects of Malfunction (due to subluxation)

- Constipation
- Colitis
- Dysentary
- Diarrhea
- Ruptures
- Hernias





# Virtual Tour of the Spine

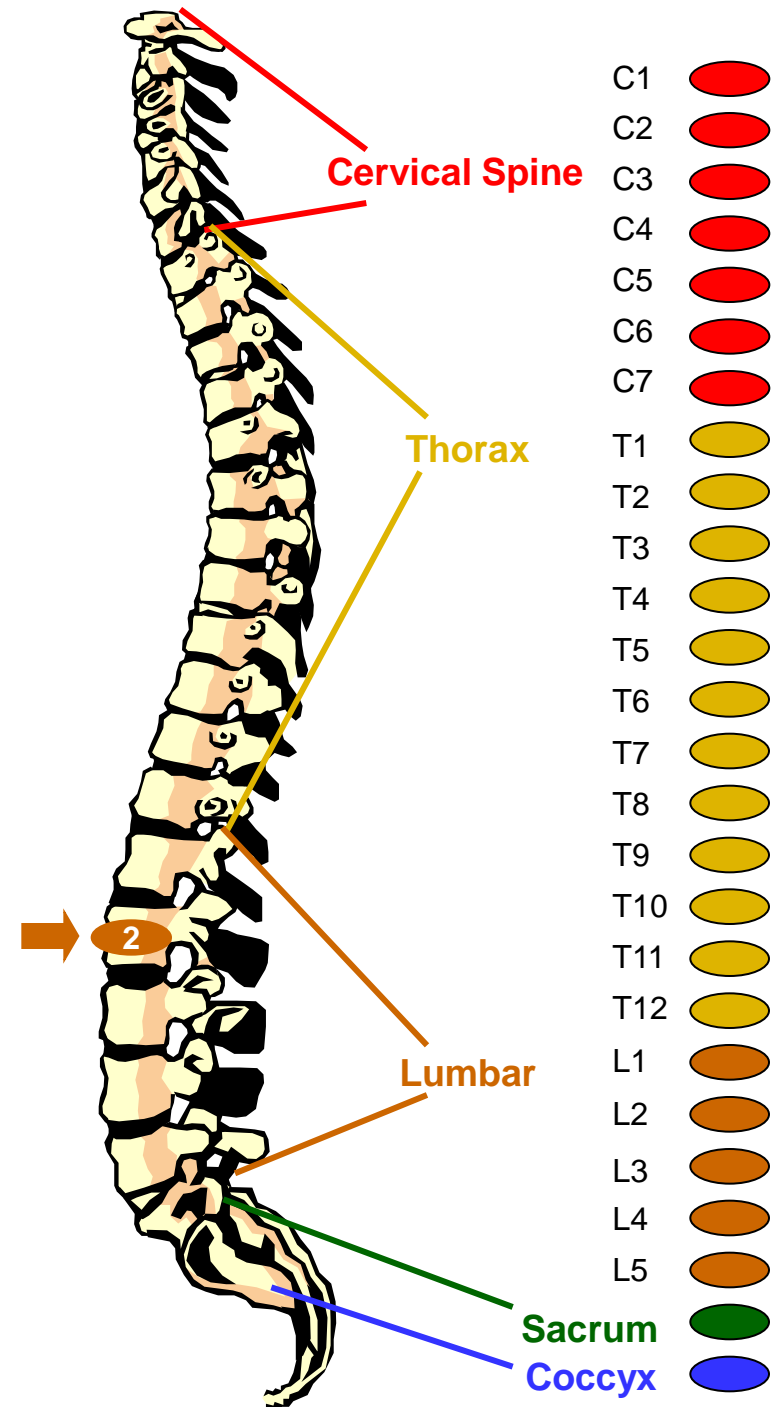
## 2nd Lumbar Vertebra

### Areas controlled by Nerves:

- Appendix
- Abdomen
- Upper leg

### Possible Effects of Malfunction (due to subluxation)

- Cramps
- Difficult breathing
- Acidosis
- Varicose veins





# Virtual Tour of the Spine

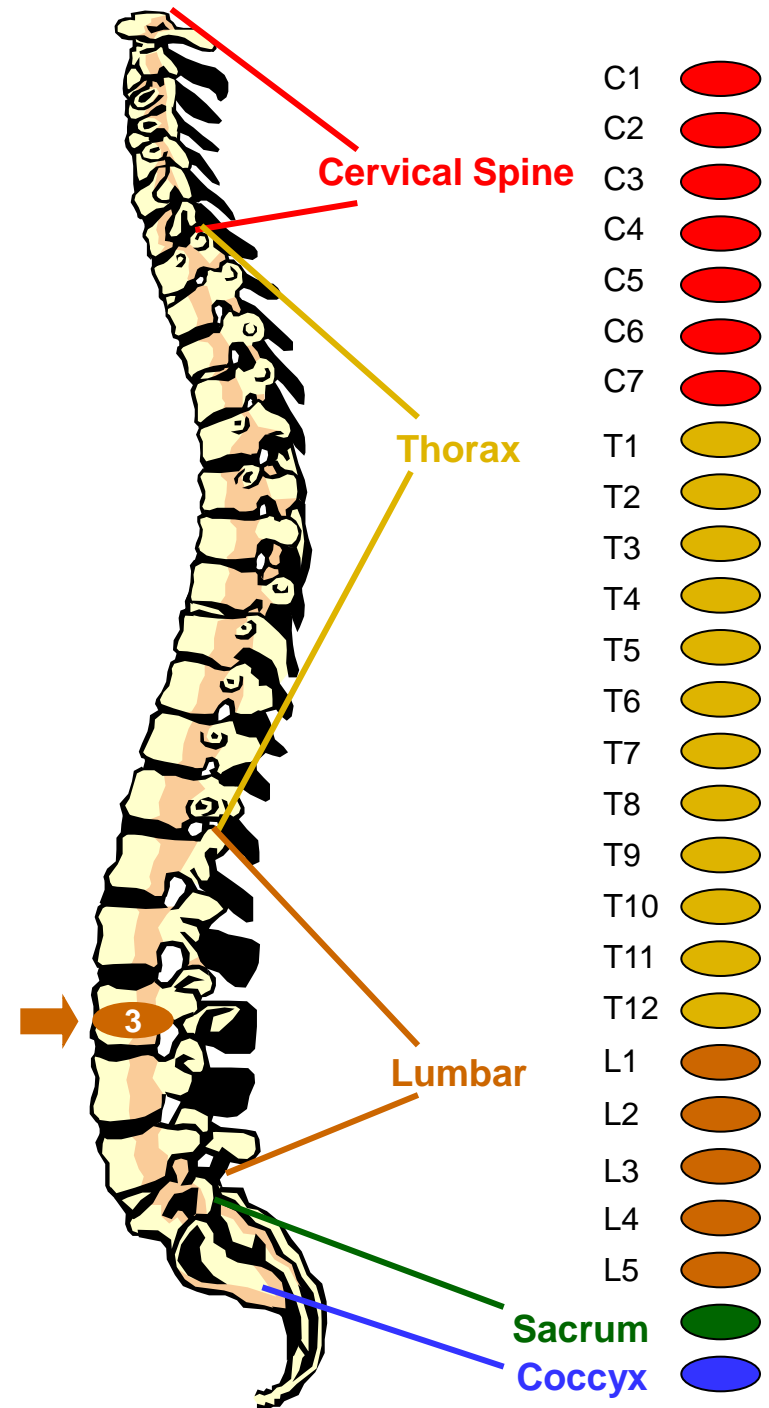
## 3rd Lumbar Vertebra

### Areas controlled by Nerves:

- Sex organs
- Uterus
- Bladder
- Knees

### Possible Effects of Malfunction (due to subluxation)

- Bladder troubles
- Menstrual troubles
- Miscarriages
- Bed wetting
- Impotency
- Change of life symptoms
- Knee pains





# Virtual Tour of the Spine

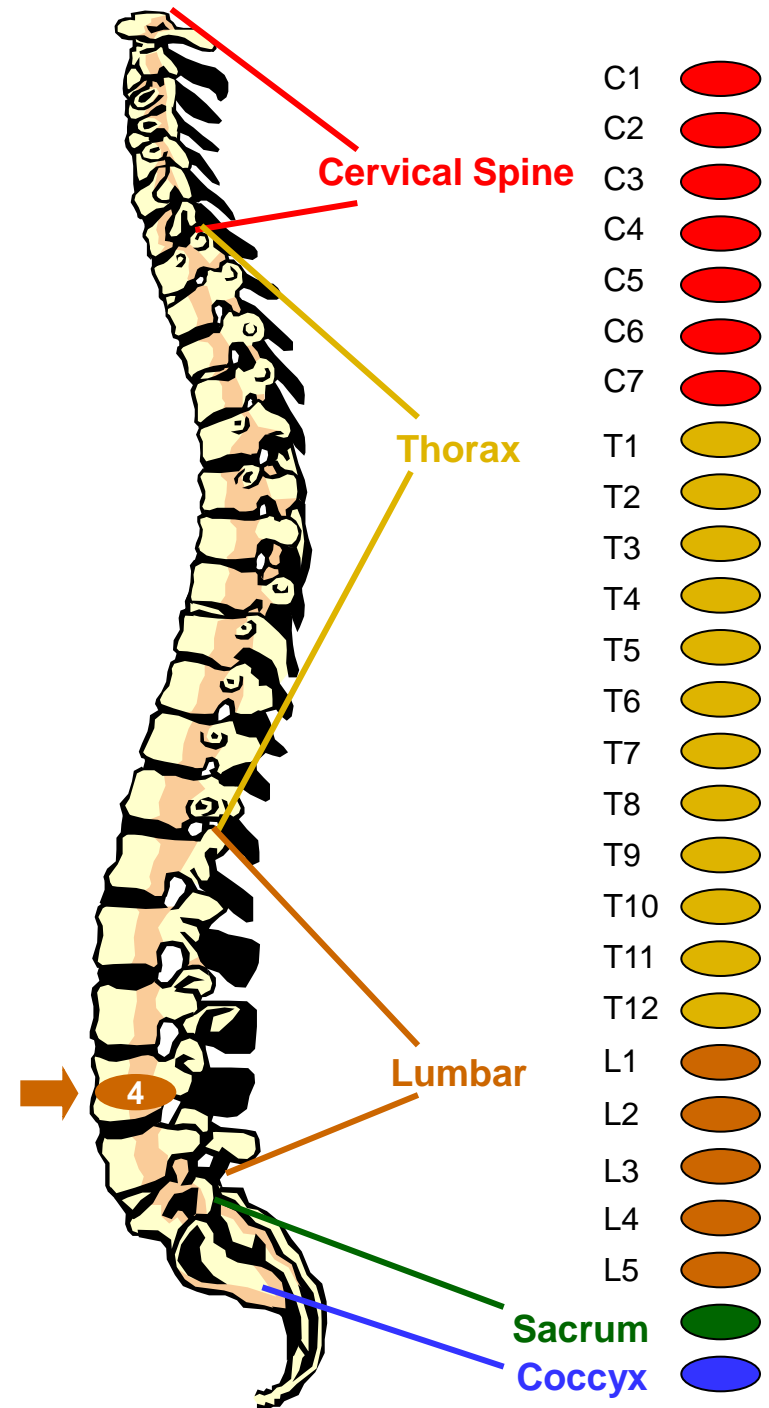
## 4th Lumbar Vertebra

### Areas controlled by Nerves:

- Prostate gland
- Muscles of the lower back
- Sciatic nerve

### Possible Effects of Malfunction (due to subluxation)

- Sciatica
- Lumbago
- Pain of frequent urination
- Backaches







# Virtual Tour of the Spine

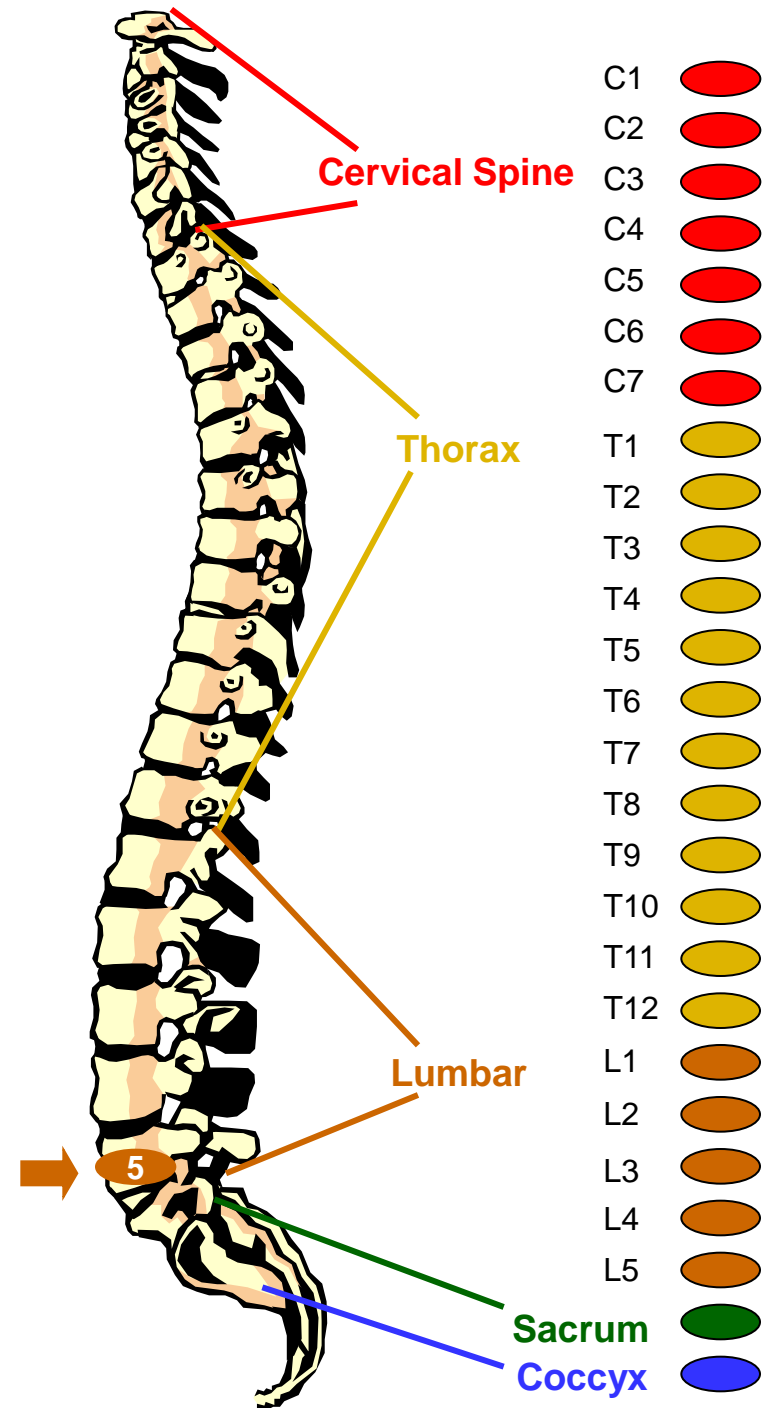
## 5th Lumbar Vertebra

### Areas controlled by Nerves:

- Lower legs
- Ankles
- Feet

### Possible Effects of Malfunction (due to subluxation)

- Poor circulation in the legs
- Swollen ankles
- Weak ankles and arches
- Cold feet
- Weakness in the legs
- Leg cramps





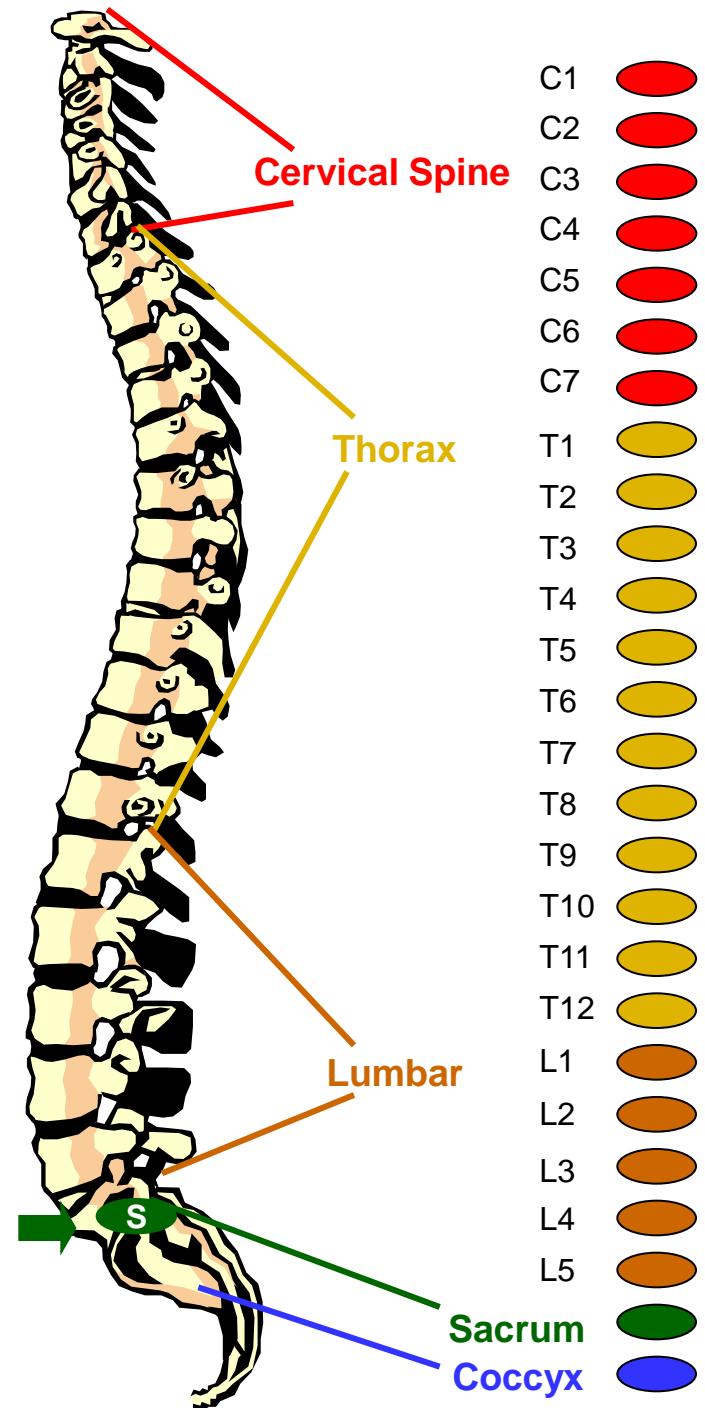
# Virtual Tour of the Spine Sacrum

## Areas controlled by Nerves:

- Hip bones
- Buttocks

## Possible Effects of Malfunction (due to subluxation)

- Lower back pain
- Spinal curvature





# Virtual Tour of the Spine

## Coccyx

### Areas controlled by Nerves:

- Rectum
- Anus

### Possible Effects of Malfunction (due to subluxation)

- Haemorrhoids
- Pruritis (itching)
- Pain at end of spine upon sitting

